

**OFFICIAL#** 1090425      **ABS#** NA      **CLASS** Load Line only



### VESSEL DESCRIPTION

Type	Deck Barge
Service	Unrestricted
Cargo	General Cargo, Containers, Aggregate
Home Port	Palmer, AK
Build Date	2000
Builder	Orange
Wear Deck	Durabase Matts

### CAPACITY

Usable Deck	6,580 Sq. Ft.
Max Deck Load	2,500 Psf.
Ramp Width	16 Ft. 8 In.
Ramp Length	25 Ft.
Ramp Capacity	50 short tons
Ramp Weight	25,000 Lbs.
Side Keys	2 ea 25' wide

### COMMENTS

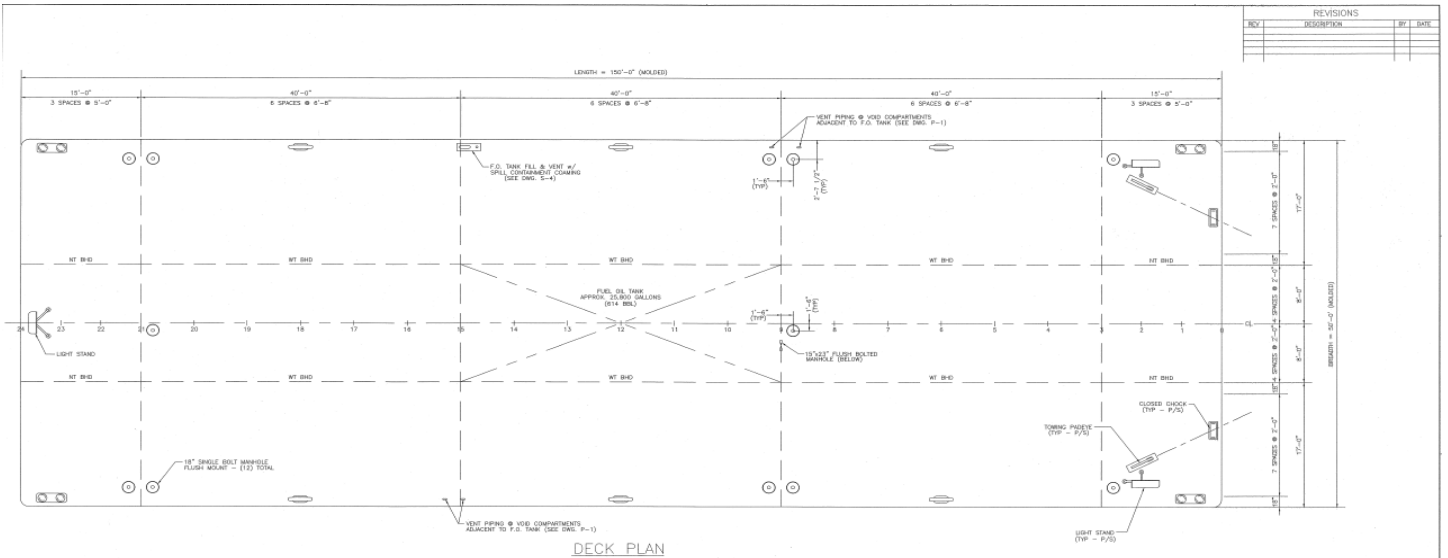
Former Name	SALCHA
-------------	--------

### MACHINERY

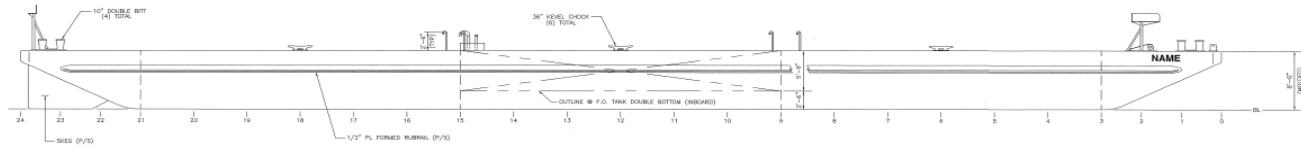
HPU	Kubota
Anchor Winch	Cable 1.125" x700' w 2K anchor
deck winch	Pull Master M12
Ramp	Pull Master M12
Generator	Honda 6500 Portable

### DIMENSIONS

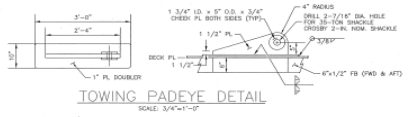
Gross Ton	416
ITC GR Tons	416
ITC Net Tons	124
Draft Min	18 In.
Draft Max	7 Ft.
Reg. Length	144 Ft.
Reg. Width	50 Ft.
Reg. Depth	8 Ft.
LOA	150 Ft.
Inner Tanks	1 double bottom 20K FO Grade D



DECK PLAN



OUTBOARD PROFILE

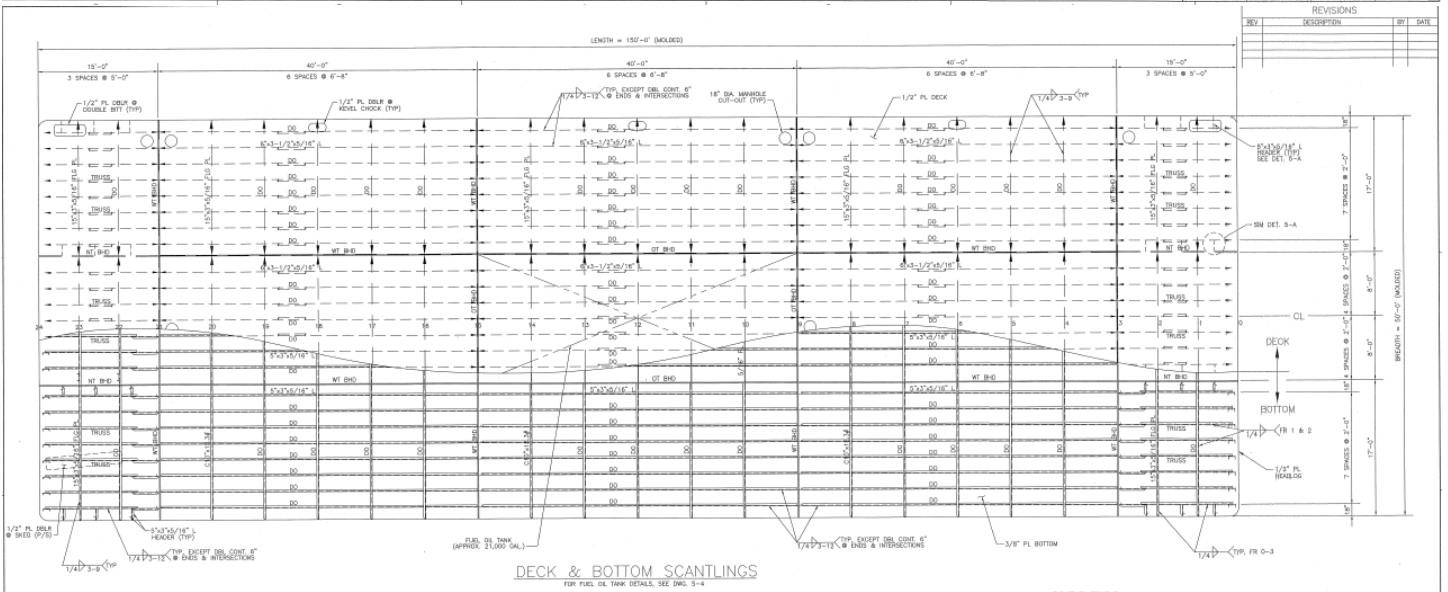


TOWING PADEYE DETAIL  
SCALE: 3/4\"/>

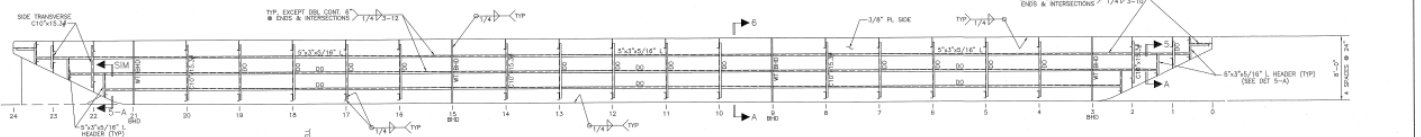
REVISIONS			
REV	DESCRIPTION	BY	DATE

**CONRAD Shipyard, Inc.**  
100'x50'x8'-0" DECK CARGO BARGE  
DECK ARRANGEMENT & OUTBOARD PROFILE

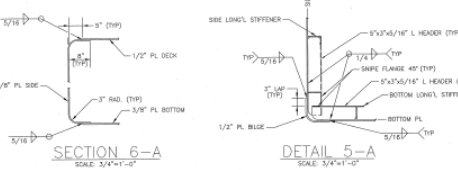
REV	DATE	BY	CHK	DATE



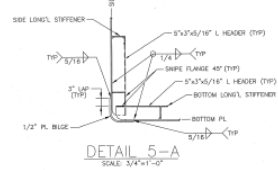
DECK & BOTTOM SCANTLINGS



SIDE SCANTLINGS



SECTION 6-A  
SCALE: 3/4\"/>



DETAIL 5-A  
SCALE: 3/4\"/>

TO CLASS:  
ABS CLASS #A1 BARGE

- GENERAL NOTES:**
- DECK DESIGNED FOR MAXIMUM UNIFORM DRY LOAD = 2000 PSF.
  - CENTER COMPARTMENT, FRAME 9-15, TO BE FUEL OIL TANK. TANK VENT HEIGHT TO BE 30' ABOVE DECK.
  - ALL OTHER COMPARTMENTS ARE VOIDS. VENT PIPES TO BE INSTALLED IN COMPARTMENTS ADJACENT TO F.O. TANK.

**CONRAD Shipyard, Inc.**  
100'x50'x8'-0" DECK CARGO BARGE  
SCANTLINGS PLAN

REV	DATE	BY	CHK	DATE